

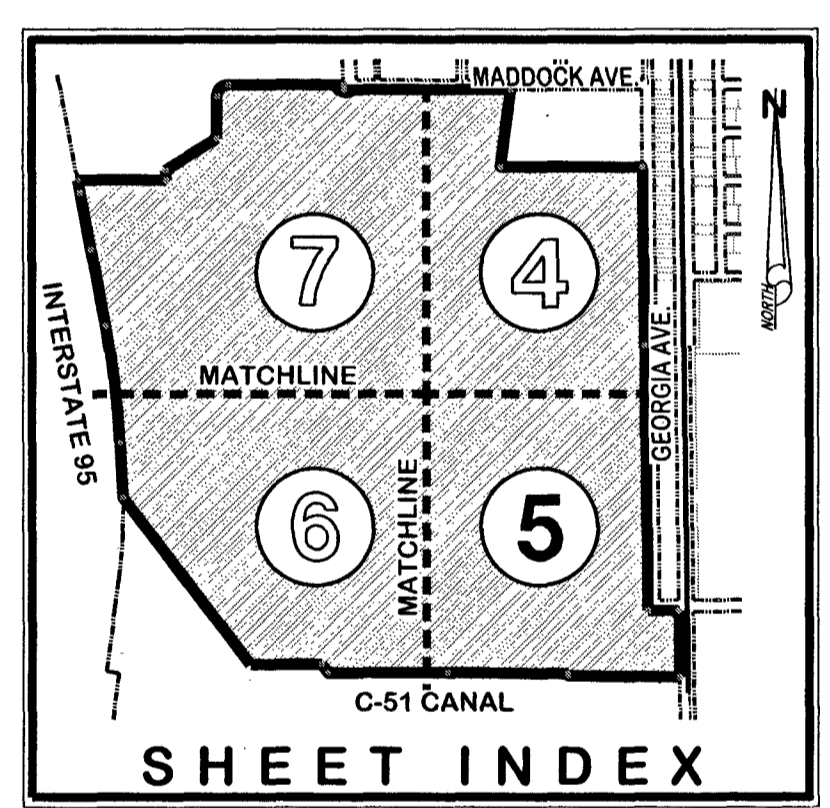
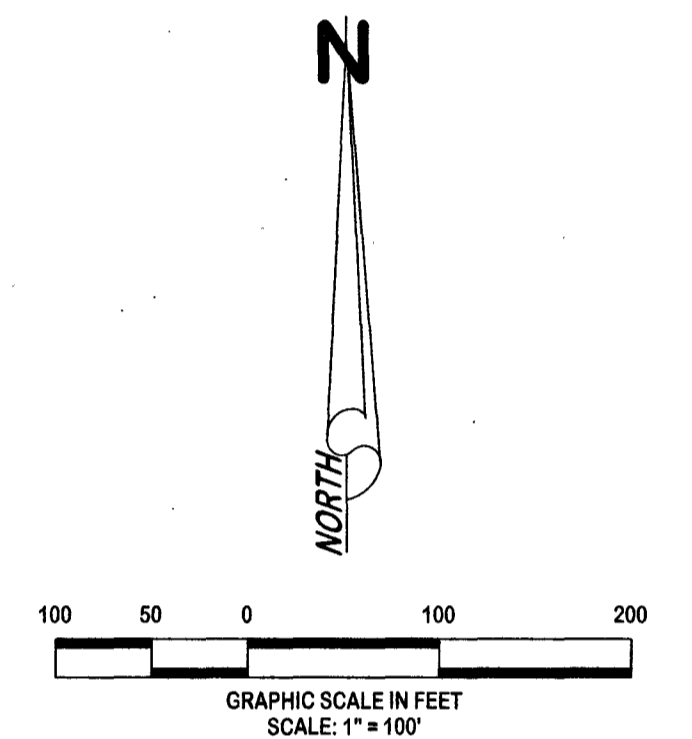
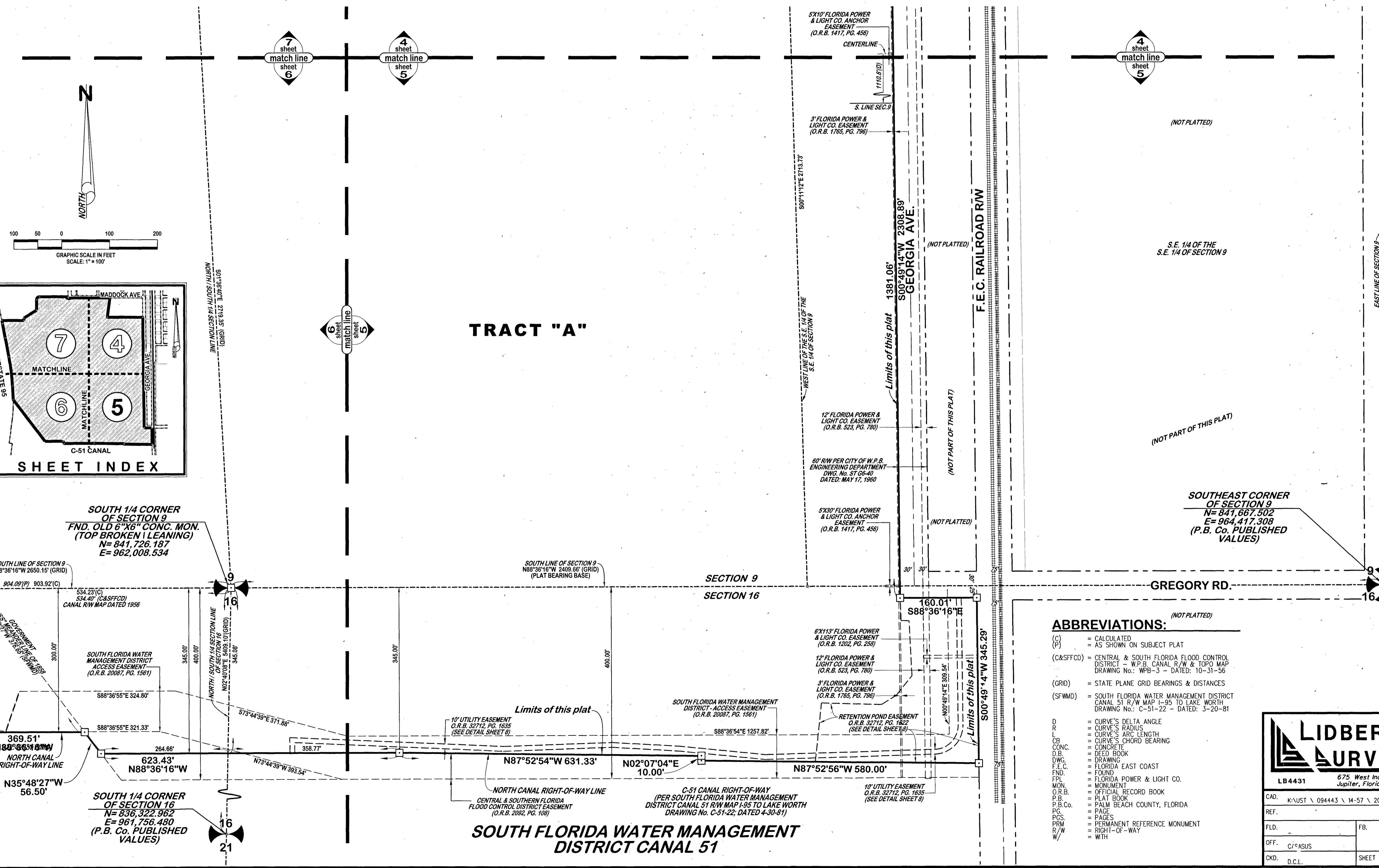
WEST PALM BEACH GOLF PARK

BEING A REPLAT OF A PORTION OF MARIMONT, AS SHOWN IN PLAT BOOK 14, PAGE 57 AND A REPLAT OF A PORTION OF MARIAN PARK, AS SHOWN IN PLAT BOOK 4, PAGE 52, AND A REPLAT OF A PORTION OF WOODLAWN, AS SHOWN IN PLAT BOOK 10, PAGE 41, PUBLIC RECORDS OF PALM BEACH COUNTY, FLORIDA AND A PORTION OF THE NORTH 120 FEET OF GOVERNMENT LOT 3, SECTION 9, TOWNSHIP 44 SOUTH, RANGE 43 EAST AND A PORTION OF GOVERNMENT LOTS 1 AND 2, SECTION 16, TOWNSHIP 44 SOUTH, RANGE 43 EAST LYING NORTH OF THE NORTH CANAL RIGHT-OF-WAY LINE OF THE SOUTH FLORIDA WATER MANAGEMENT DISTRICT C-51 CANAL
CITY OF WEST PALM BEACH, PALM BEACH COUNTY, FLORIDA

JANUARY 2023

90

SHEET 5 OF 9



SOUTH 1/4 CORNER OF SECTION 9
FND. OLD 6"X6" CONC. MON. (TOP BROKEN & LEANING)
 N= 841,726.187
 E= 962,008.534

SOUTHEAST CORNER OF SECTION 9
 N= 841,667.502
 E= 964,417.308
 (P.B. Co. PUBLISHED VALUES)

- ABBREVIATIONS:**
- (C) = CALCULATED
 - (P) = AS SHOWN ON SUBJECT PLAT
 - (C&SFCD) = CENTRAL & SOUTH FLORIDA FLOOD CONTROL DISTRICT - W.P.B. CANAL R/W & TOPO MAP DRAWING No.: WPB-3 - DATED: 10-31-56
 - (GRID) = STATE PLANE GRID BEARINGS & DISTANCES
 - (SFWMD) = SOUTH FLORIDA WATER MANAGEMENT DISTRICT CANAL 51 R/W MAP I-95 TO LAKE WORTH DRAWING No.: C-51-22 - DATED: 3-20-81

- LEGEND:**
- = DENOTES SET "PRM" SET 4"X4" CONC. MON. W/ DISK STAMPED "PRM LB 4431" UNLESS OTHERWISE NOTED
 - = DENOTES SET "PRM" SET MAR. NAIL & DISK STAMPED "PRM LB 4431" UNLESS OTHERWISE NOTED

LIDBERG LAND SURVEYING, INC.
 675 West Indiantown Road, Suite 200, Jupiter, Florida 33458 TEL. 561-746-8454

CAO.	K:\JUST \ 094443 \ 14-57 \ 20-061 \ 20-061-306 \ 20-061-306 .DGN		
REF.			
F.L.D.		FB.	PG.
OFF.	C/SASUS		JOB 20-061-306
CKD.	D.C.L.	SHEET 5 OF 9	DATE JANUARY 2023
		DWG.	D20-061P